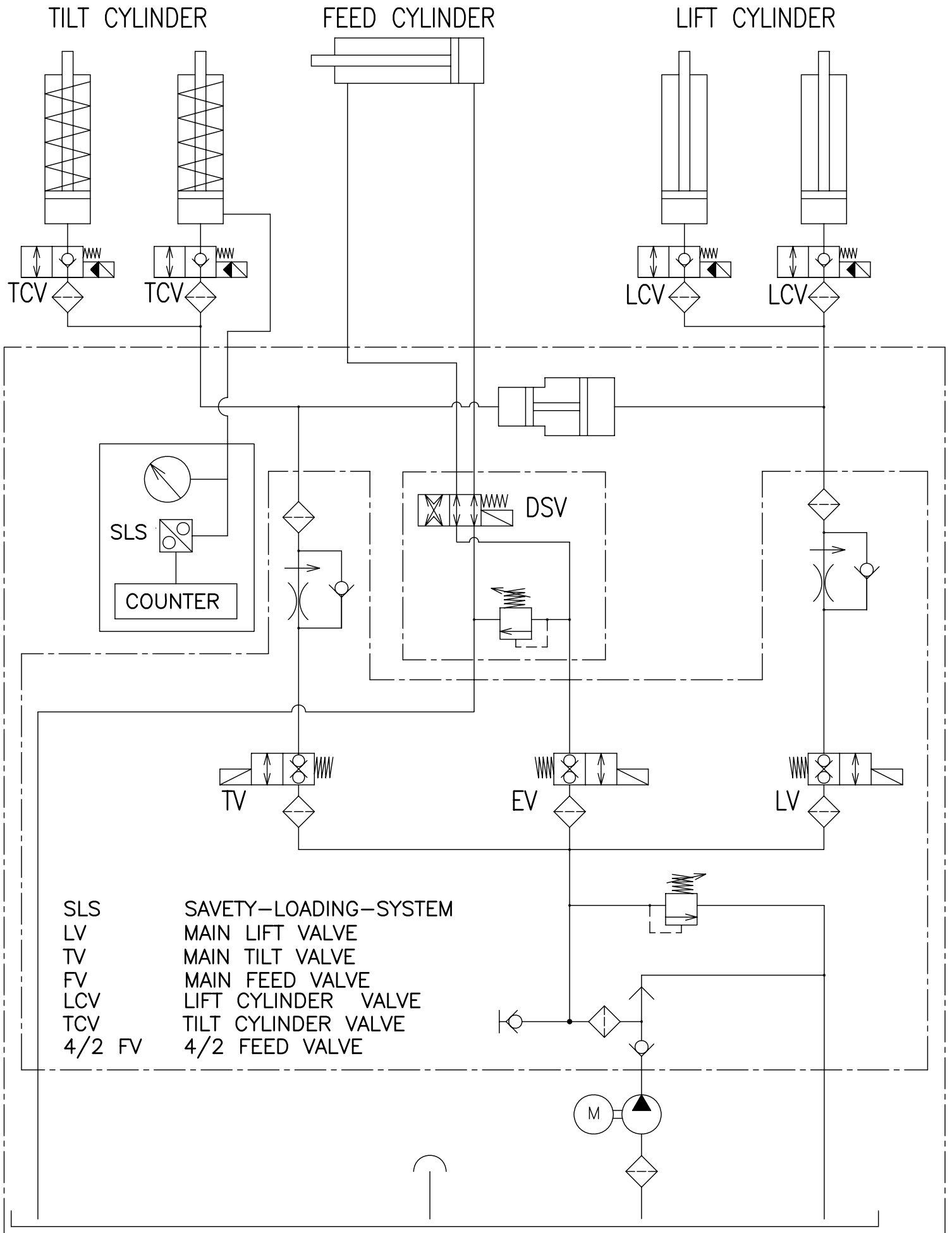
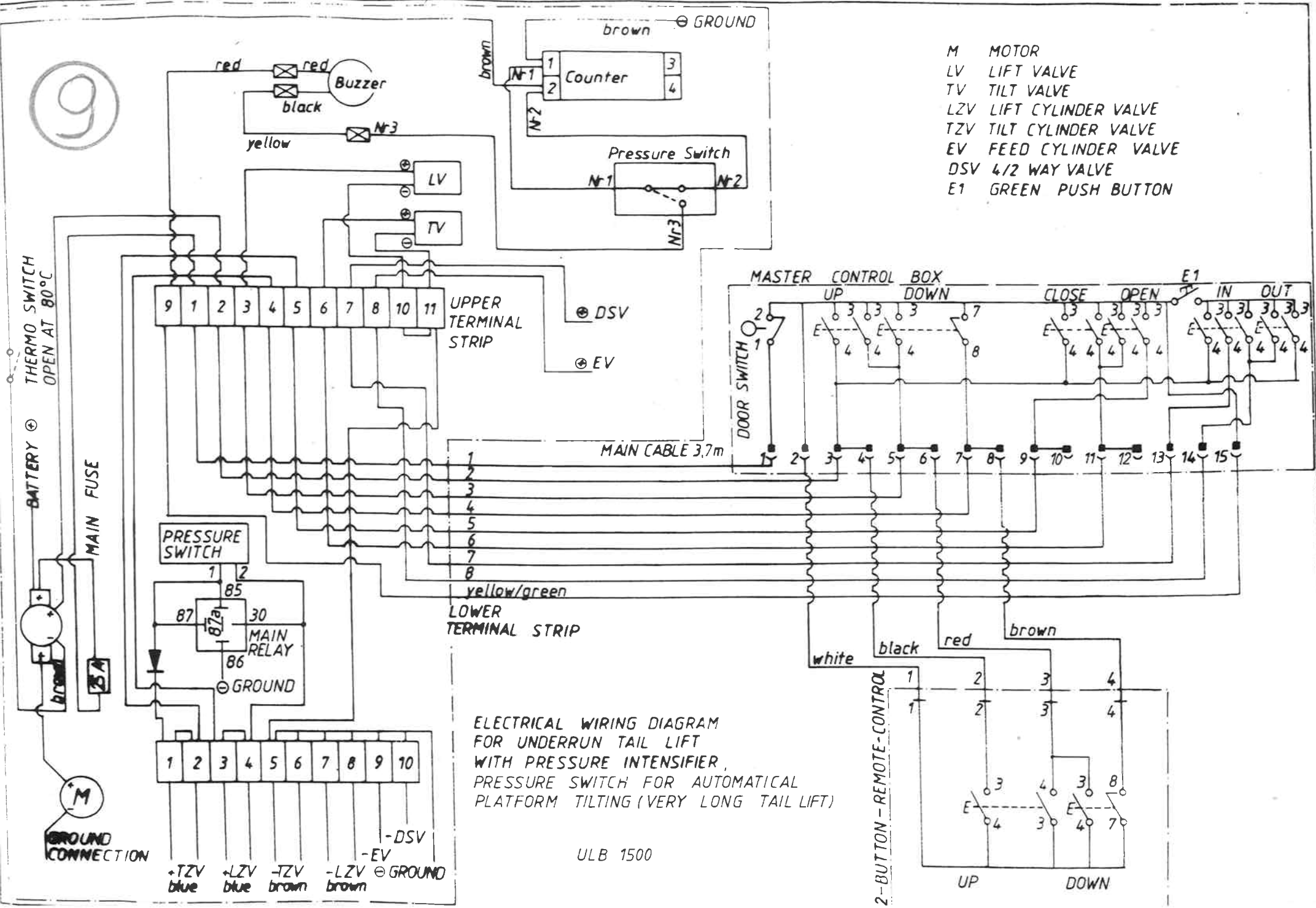


⑨⑭ WIRING SYMBOL (VB12+VB-42)



9



- M MOTOR
- LV LIFT VALVE
- TV TILT VALVE
- LZV LIFT CYLINDER VALVE
- TZV TILT CYLINDER VALVE
- EV FEED CYLINDER VALVE
- DSV 4/2 WAY VALVE
- E1 GREEN PUSH BUTTON

ELECTRICAL WIRING DIAGRAM FOR UNDERRUN TAIL LIFT WITH PRESSURE INTENSIFIER, PRESSURE SWITCH FOR AUTOMATICAL PLATFORM TILTING (VERY LONG TAIL LIFT)

ULB 1500

- 1 -DSV
- 2 -TZV blue
- 3 -LZV blue
- 4 -TZV brown
- 5 -LZV brown
- 6 -EV
- 7 -EV
- 8 -EV
- 9 -EV
- 10 -EV
- 11 -EV
- 12 -EV
- 13 -EV
- 14 -EV
- 15 -EV

