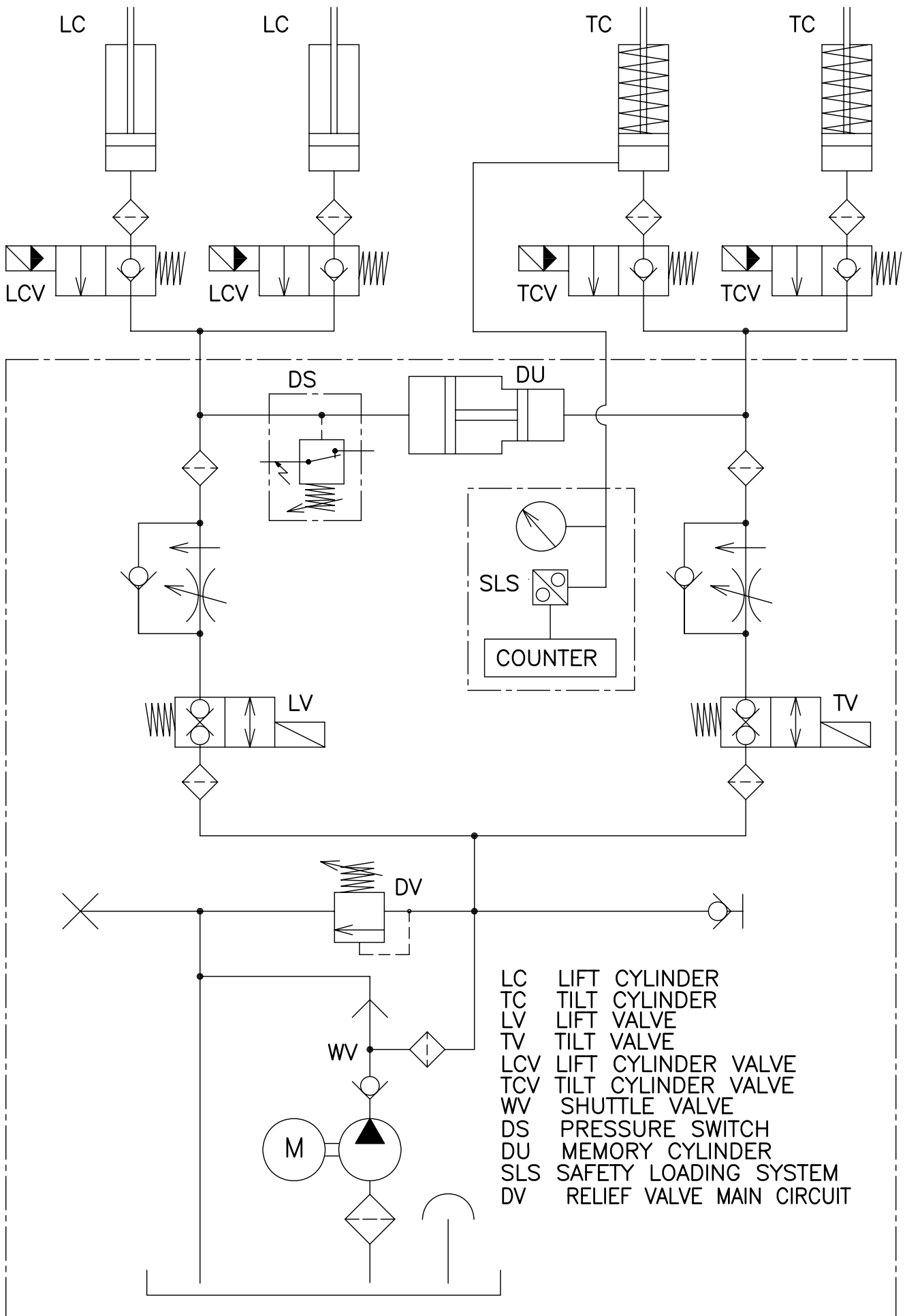


# HYDRAULIC SCHEMATIC



- LC LIFT CYLINDER
- TC TILT CYLINDER
- LV LIFT VALVE
- TV TILT VALVE
- LCV LIFT CYLINDER VALVE
- TCV TILT CYLINDER VALVE
- WV SHUTTLE VALVE
- DS PRESSURE SWITCH
- DU MEMORY CYLINDER
- SLS SAFETY LOADING SYSTEM
- DV RELIEF VALVE MAIN CIRCUIT

18

